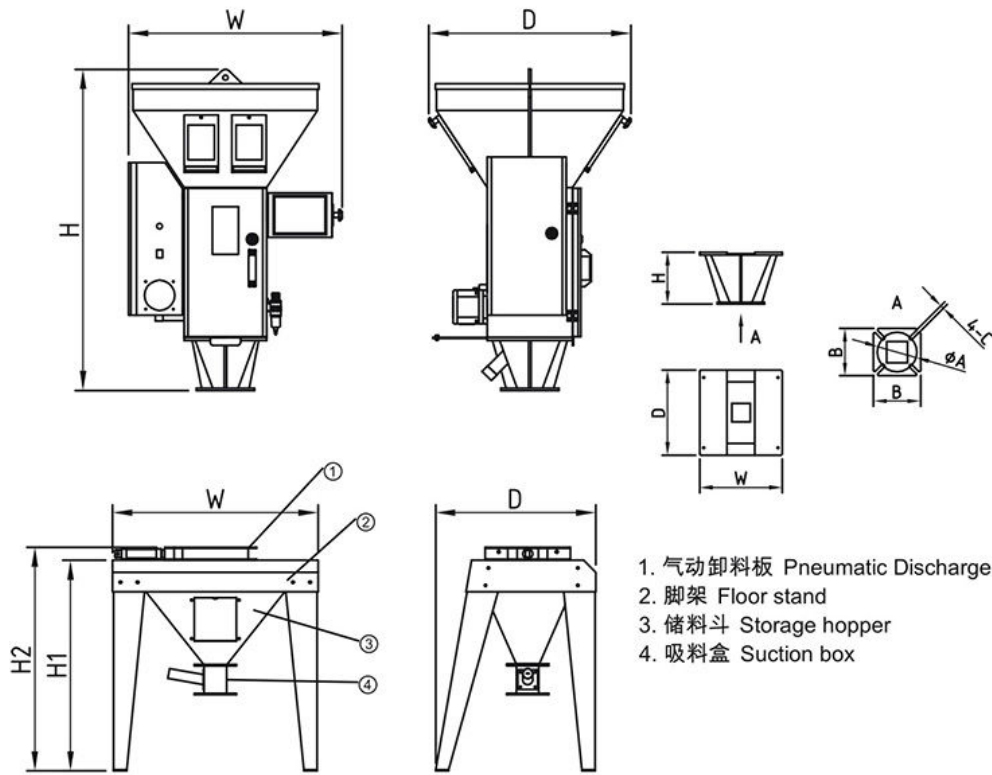


# OUTLINE DRAWINGS AND OPTIONS



## SPECIFICATIONS

型号 Model	XGB-50	XGB-100	XGB-200	XGB-400	XGB-600	XGB-800	XGB-1200	XGB-2000	XGB-2500	XGB-3000
组数数量 Qty of Group number	4	4	4	4	4	4	4	4	4	4
混料能力 Mixing capacity ( kg/hr )	50	100	200	400	600	1200	800	2000	2500	3000
批次重量 Batch weight ( kg )	0.6	1.2	2.2	4.5	6	12	8	20	25	30
主料混料范围 main material mixing range ( % )	5~100	5~100	5~100	5~100	5~100	5~100	5~100	5~100	5~100	5~100
添加剂混料范围 additive mixing range ( % )	0.5~10	0.5~10	0.5~10	0.5~10	0.5~10	0.5~10	0.5~10	0.5~10	0.5~10	0.5~10
主料斗容积 main hopper volume ( L )	18	25	32	45	70	130	100	160	180	230
添加剂料斗容积 additive hopper volume ( L )	18	25	32	45	70	130	100	160	180	230
搅拌桶容积 mixing barrel volume ( L )	6	6	20	20	40	80	80	80	100	180
电源规格 power supply(V/Hz)	1Φ 230/50	1Φ 230/50	1Φ 230/50	1Φ 230/50	3Φ 400/50	3Φ 400/50	3Φ 400/50	3Φ 400/50	3Φ 400/50	3Φ 400/50
总功率 total power ( kW )	0.12	0.12	0.25	0.25	0.55	0.55	1.5	1.5	1.5	3
压缩空气 compressed air ( kgf/cm <sup>2</sup> )	6~8	6~8	6~8	6~8	6~8	6~8	6~8	6~8	6~8	6~8
噪音 max. noise level ( dB )	<75	<75	<75	<75	<75	<75	<75	<75	<75	<75
H(mm)	1010	1050	1225	1405	1675	1875	1870	2010	2100	2350
W(mm)	605	670	815	850	975	1060	1210	1310	1310	1400
D(mm)	640	700	770	870	960	1070	1160	1260	1260	1470
底座 base ( mm ) (HxWxDxBxAxC)	142*240*240* 150*110*13	142*240*240* 150*110*13	200*313*323* 180*150*13	196*313*323* 180*150*13	196*413*423* 220*180*13	---	---	---	---	---
移动脚架 mobile stand ( mm ) (H1xH2xWxD)	700*750* 680*530	700*750* 680*530	800*850* 780*610	800*850* 780*610	900*965* 920*725	900*965* 920*725	1050*1115* 1140*1140	1050*1115* 1140*1140	1050*1115* 1140*1140	1200*1265* 1240*1240
净重 NW ( kg ) (机器安装型 machine installation)	90	90	130	140	180	200	250	280	290	380
净重 NW ( kg ) (地面安装型 floor installation)	110	110	155	165	230	250	340	370	380	500

Note : 1) Dosing accuracy are refer to each ingredient accuracy ;  
 2) standard valves are not suitable powder dosing ;  
 3) Max .output of each model and dosing accuracy are based on the data from bulk density 0.8 ,dia. 3~4mm pellets in a test criteria of continuous running.